

optimal
nutritional care
for all

The Cambridge Conference

19 & 20 November 2019

*Co-creating the
Patient Pathway*



Cancer Research UK
Cambridge Institute

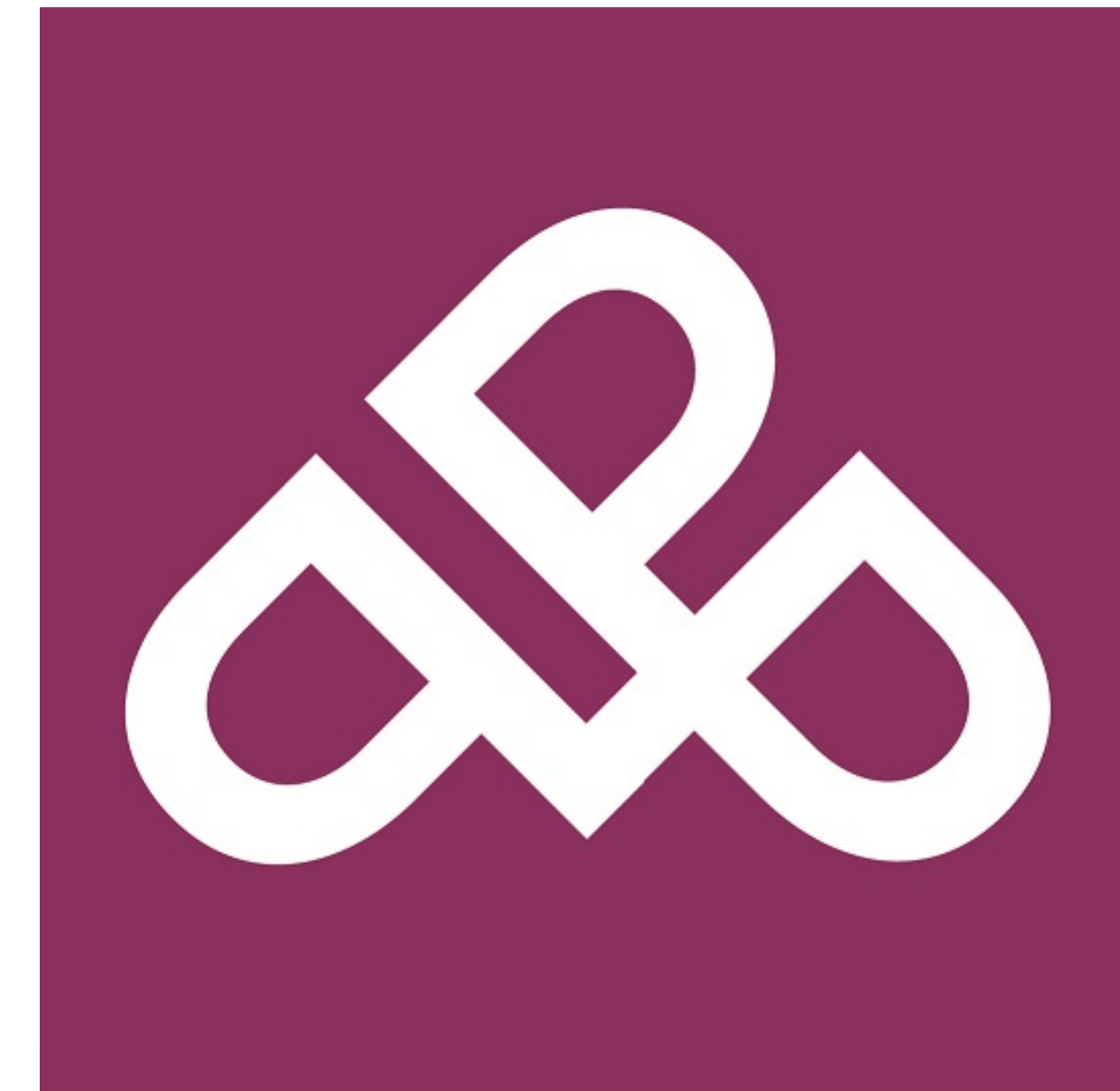


University Arms Hotel
Cambridge

Ben Howlett

Managing Director

Public Policy Projects



Public Policy Projects

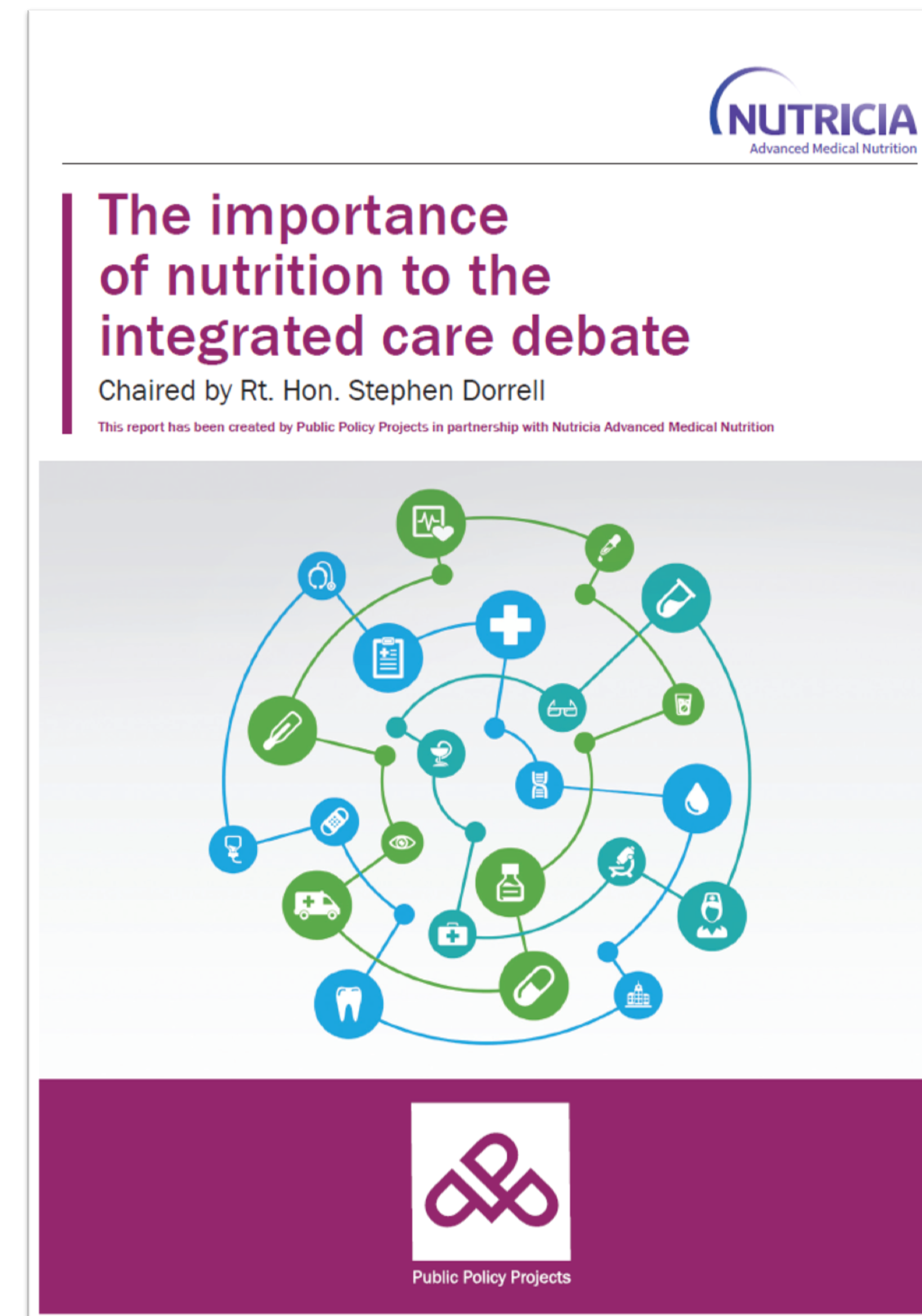
The new UK health and social care landscape: Opportunities to improve nutritional care

- Current reforms in the health and care landscape
- General Election 2019...
- Aging population and growth in demand
- Lack of emphasis



The importance of nutrition to the integrated care debate

- Better nutritional practice
- Collection of data
- Education and Training of health professionals
- A whole system approach



Recommendations

1. Appoint a clinical lead for nutrition at the Department of Health and Social Care and NHS England
2. Include a malnutrition risk score in the NHS Health Check as standard for all primary care providers
3. Embed the malnutrition risk score alongside frailty screening for the elderly
4. Include nutritional training in all medical school and nursing undergraduate and postgraduate training programmes as recognised by the GMC

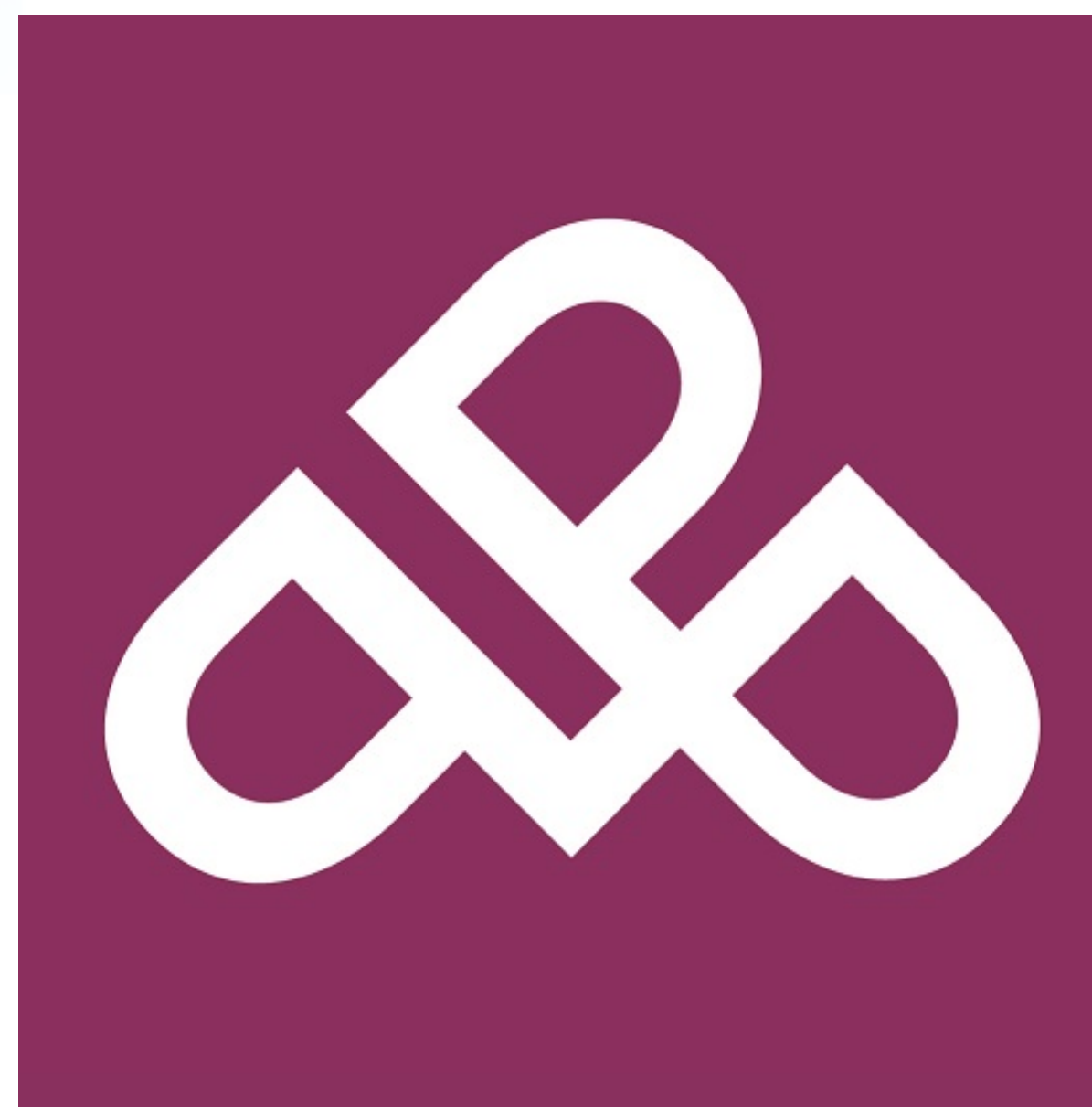


Recommendations

5. Embed support for nutrition within all Integrated Care Systems (ICS)
6. Ensure regulatory bodies including CQC include a nutritional consideration in inspections
7. Facilitate a framework and process to enable the effective gathering, management and analysis of malnutrition data
8. Implement the Malnutrition Universal Screening Tool ('MUST') at identified key points in the patient pathway
9. Implement a review of processes to address instances where patients are screened for malnutrition



optimal
nutritional care
for all



Public Policy Projects

www.publicpolicyprojects.com