

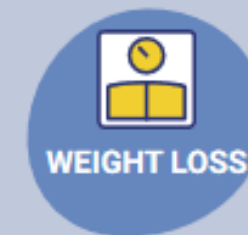
GLIM Implementation in practice & research

Results from the GLIM Implementation survey

Harriët Jager-Wittenaar, PhD, RD

Professor of Malnutrition and Healthy Ageing

- Hanze University of Applied Sciences
- EFAD



GLIM Implementation Working Group

- Initiated early 2021
- 4 co-leaders:



Harriët Jager-Wittenaar
EFAD



Ainsley Malone
ASPEN



Matthias Pirlich
ESPEN



Alison Steiber
AND

- Two tasks:
 1. To describe current practice and to identify barriers and facilitators for implementation of GLIM in practice and research
 2. To give guidance on strategies for implementation of the GLIM framework in both practice and research

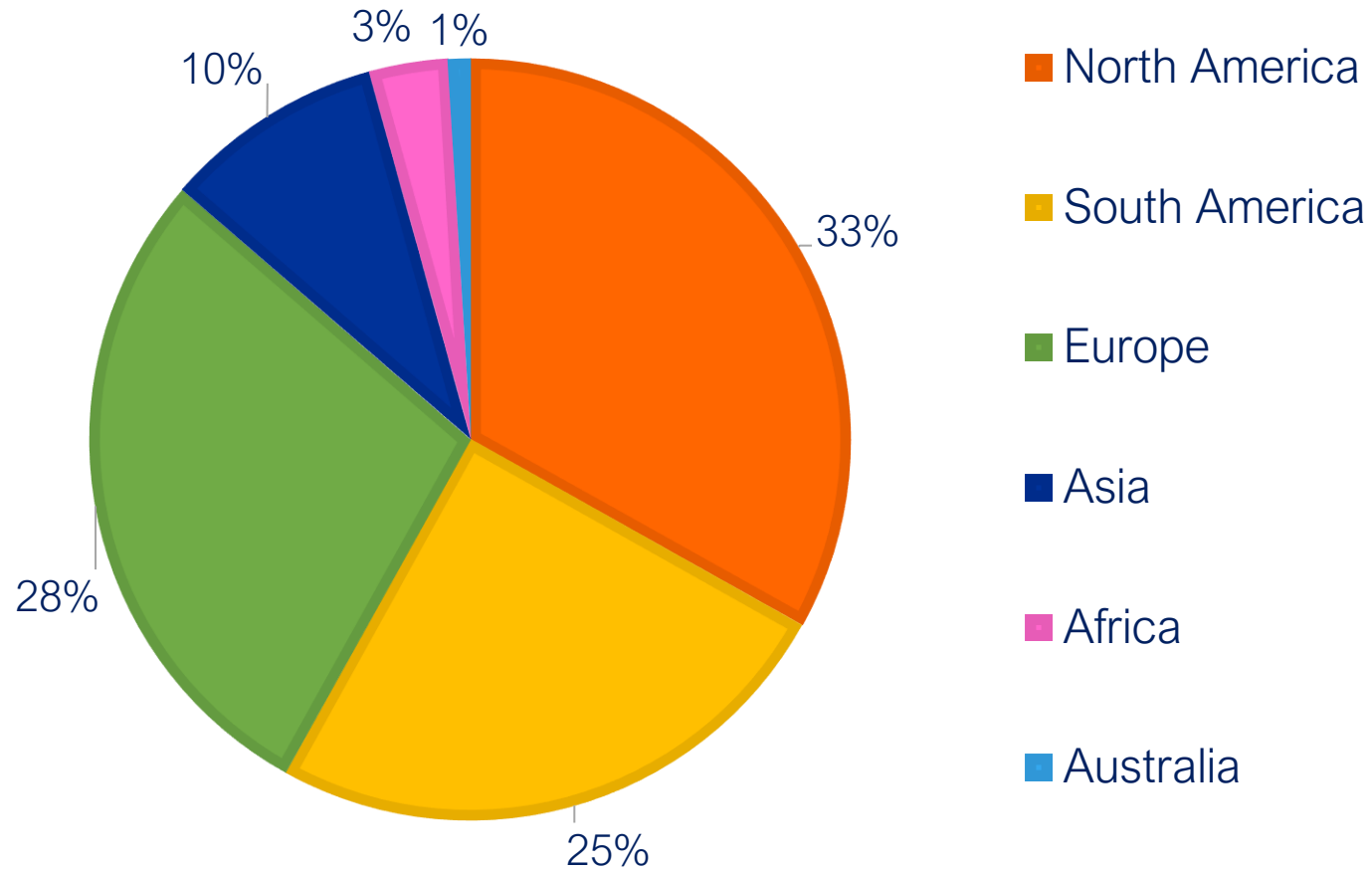
Survey GLIM Implementation - Methods

- 27 questions, skip logic feature
- Link to survey disseminated 7 December 2022 – 31 January 2023
- Societies newsletters, social media and personal networks



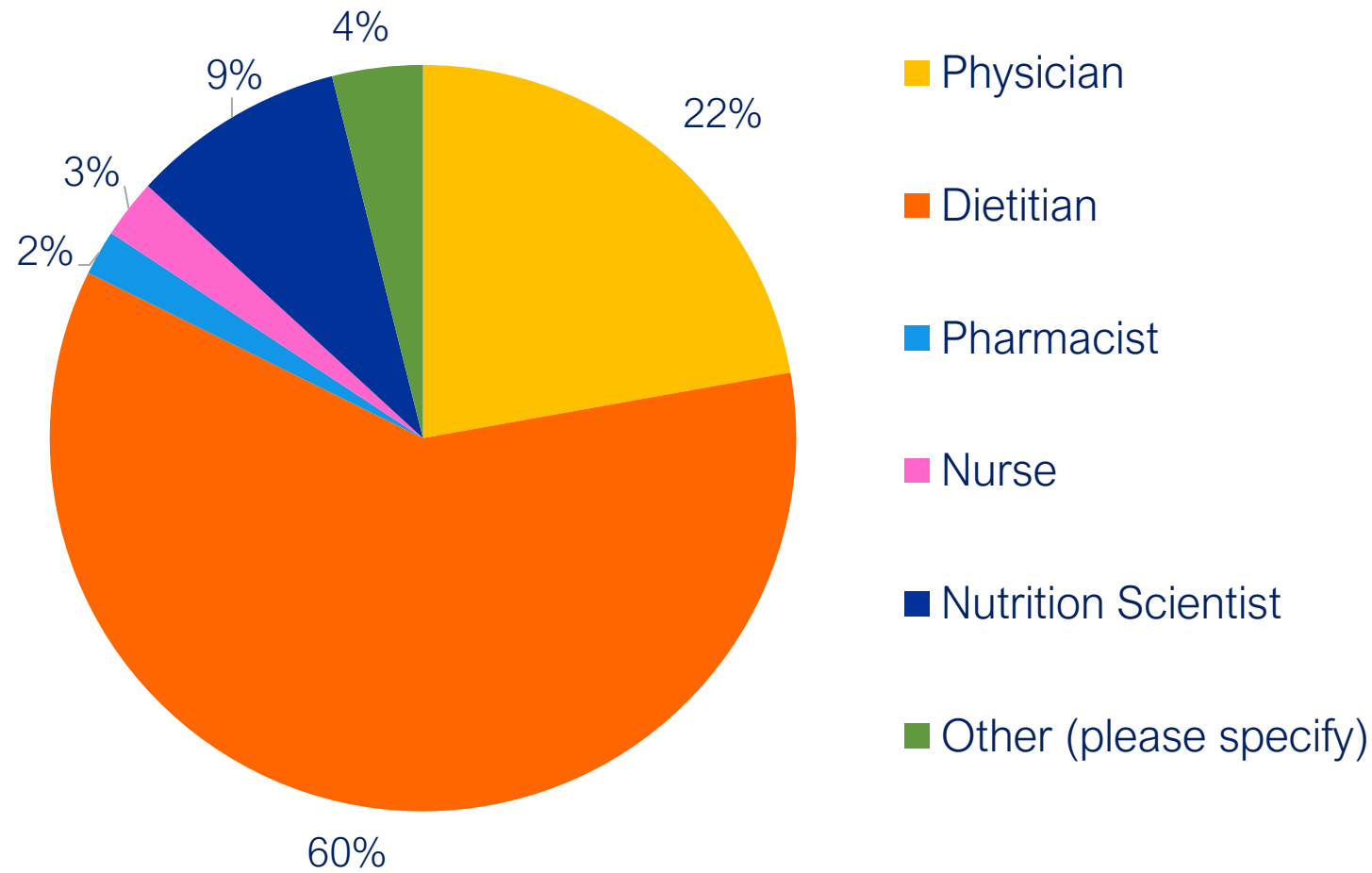
Survey GLIM Implementation - Results

Continents (n=1532)



Survey GLIM Implementation - Results

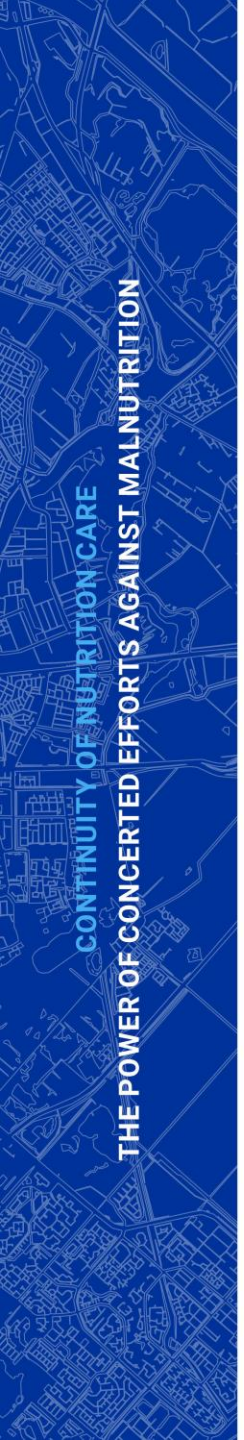
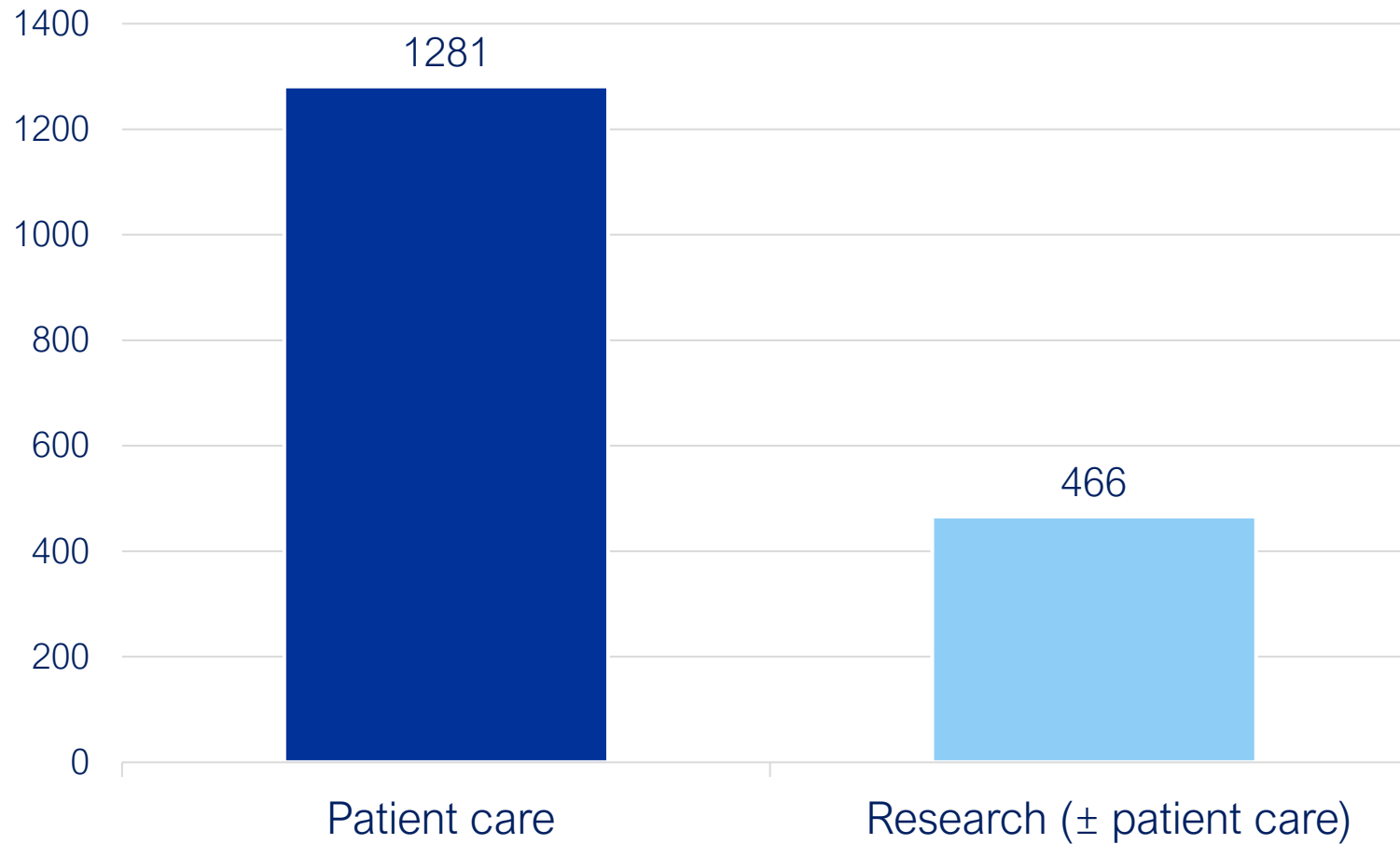
Discipline (n=1532)



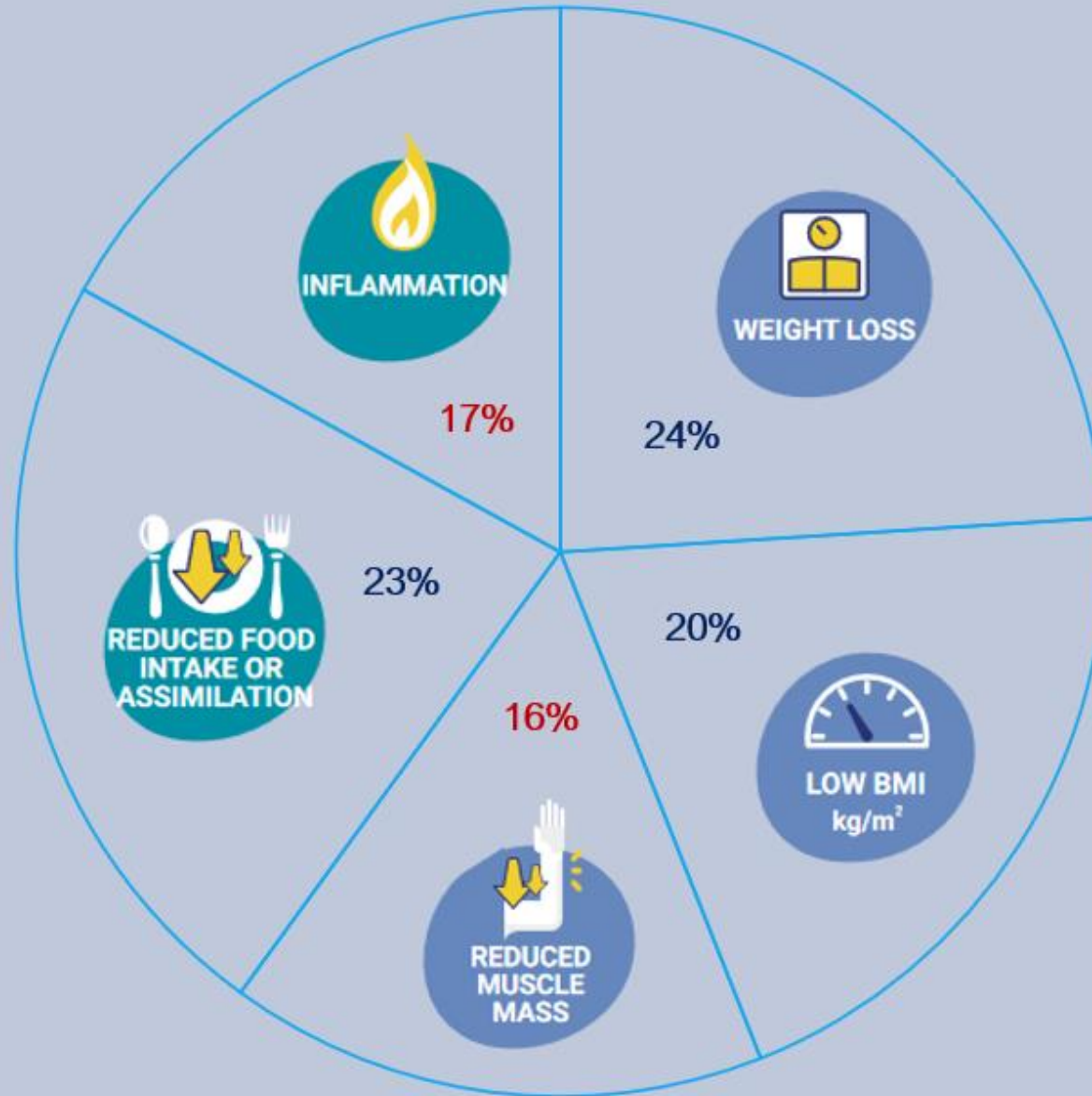
CONTINUITY OF NUTRITION CARE
THE POWER OF CONCERTED EFFORTS AGAINST MALNUTRITION

Survey GLIM Implementation - Results




Work setting (n=1529)



Which GLIM criteria are being used?



Conclusions

- Implementation GLIM framework is actively in progress 
- Main general barriers:
 - insufficient knowledge about implementation processes
 - lack of prioritization in the organization
 - these barriers are “treatable”!
- Use of muscle mass and inflammation as criteria requires continuing attention 


Thank you!



ha.jager@pl.hanze.nl



@harrietjager

Special thanks to Dominiek Wolters
MSc student **VU**  UNIVERSITY
AMSTERDAM

